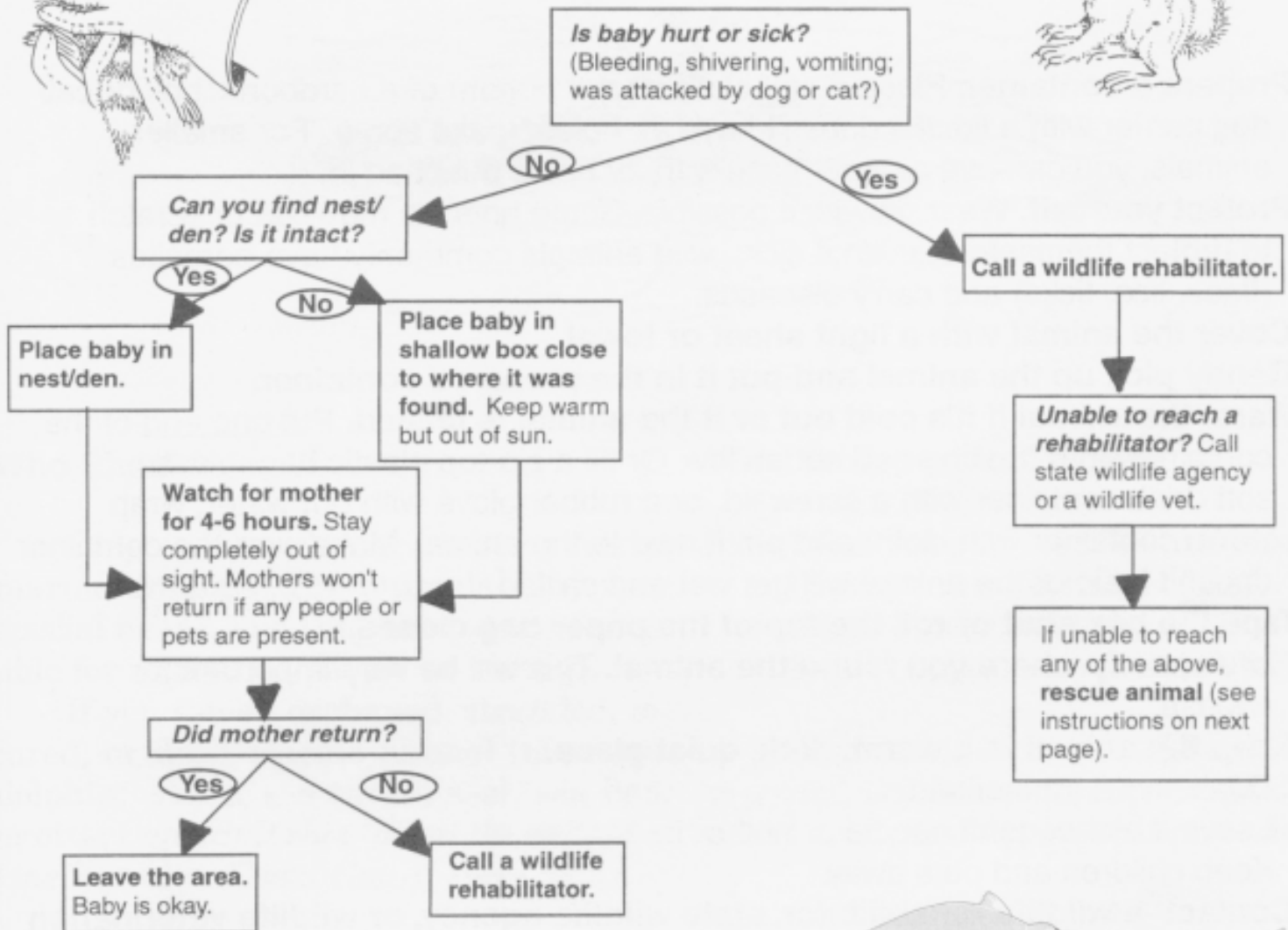


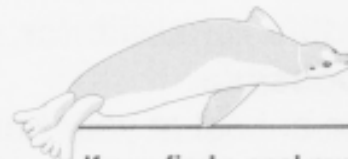
I Found a Baby Mammal ... *Now What?*



If you find baby bunnies:



- If their nest has been damaged, it can be repaired. Look for a shallow depression lined with grass and fur. Place babies in nest with a light layer of grass to hide them. Leave the area, or the mother won't return. (Mothers return only at dawn and dusk.)
- If you find healthy bunnies that are 4-5 inches long, able to hop, with eyes open and ears up, they do not need help. They are able to survive on their own. **Leave them alone.** Questions? Call a wildlife rehabilitator.



If you find a seal pup or fawn:



- Mothers normally leave their babies to go off and feed.
- If the baby looks cold, hungry, diseased, or confused; or if dogs, other animals, or people threaten its safety, **call a wildlife rehabilitator.**
- Otherwise, **leave the baby alone and leave the area.** The mother will not return if people or pets are present.